

SURGICAL QUIZ

Mohamed Said,¹ Ahmed Hazem Helmy²

¹Assistant Professor of General & Hepatobiliary Surgery, ²Professor of General & Hepatobiliary Surgery, Head of Department of General Surgery & Experimental Surgical Unit, Theodore Bilharze Research Institute, Egypt

Correspondence to: Mohamed Said, Email: hedayamsm@yahoo.com



Fig. 1

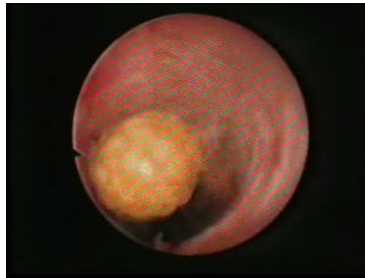


Fig. 2



Fig. 3

Male patient 42 years old with history of obstructive jaundice of 2 weeks duration, ERCP was done reporting failure of cannulation due to duodenal papilloma.

Surgical intervention was performed after preparation of patient.

1. What is the operative procedure?
2. What are the figures shown above?
3. What sort of follow up after discharge?

Please Send your answer to ejs@ess-eg.org

The correct answer and a short comment on the condition will be presented in the next issue of the journal.

The correct answer for previous Photo Quiz (Vol. 30, No. 1, Jan., 2011)

Question:

1. What sort of further investigation you would be likely to ask?
2. During laparotomy please describe what you see?
3. Please mention 3 complications the patient developed.

Answers:

1. Spiral CT after improvement of renal function.
2. Small bowel and FB at the terminal ileum and prior to ileocecal valve.
3. Had ARDS, SIRS and MOF and died.

